



A VIEW FROM THE CAB

With cold nights still lurking about, but temperatures in the 70's on some days, I guess spring is here. I heard honeybees hard at work in my large blooming cherry tree yesterday. Maybe warm days are just around the corner.

On the matter of our club house and museum, the deal involving another tenant wanting our building is now off the table, and the owner of our property has decided to place the entire parcel on the market again. In the meantime, we are once again looking to extend our lease for another 4 or 5 years, the only issue being, would it be in our current building, or a move to the larger one next door. We will keep you posted as to any news of a firm nature in regard to our lease, which currently expires in June of 2026.

The G gauge donation that was collected from Dover two weeks ago has been priced and is included in our sales areas. But the big surprise was the number of trains in the smallest models in our industry, Z scale. This collection of Z scale trains was enormous, over 1,400 pieces of rolling stock! In addition, there are 10 or more Z scale layouts of sizes from 12 inches by 20 inches, up to a sectional one that is over 4 feet in length. The team at the club has been working hard to get them all running correctly, and each will be offered for sale complete with trains and controllers. The volunteers have also priced all of the rolling stock and set it up for sale in our front hall. There is potential for a lot of sales income from this donation but expect that to happen over time. The club will retain one Z scale layout as a display item, so we can truly say we are able to show operating examples of all gauges of model railroading and Toy Trains.

Our next big event will be the Spring Fling Train Show in the Hope Center in Ocean View on May 3rd. Table sales are going well but I think there might still be a few available. Check with Skip Lee at chessietrain@comcast.net if you want to rent a table or two.

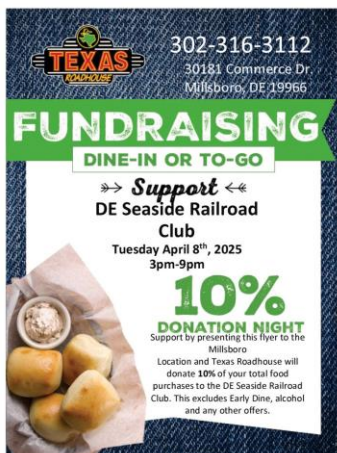
I have been in contact with two local libraries and am planning to place our traveling Thomas-The-Train layout in the South Coastal Library on or around May 5th and then relocate it to the Millsboro Library on or about the 3rd of June. These locations will have the layout for 3-4 weeks. It should be a big hit with the children.

John Hodges



Happy Easter

UPCOMING EVENTS OF THE DELAWARE SEASIDE RAILROAD CLUB



Dine & Donate!

The DSRC Fundraising Committee has scheduled a series of monthly Dine & Donate Events at area restaurants. For variety, each month a different restaurant in a different town and featuring a different cuisine will be chosen. On April 8th from 3-9 pm we will be at the Texas Roadhouse in Millsboro, DE. Just by attending one of these events the DSRC receives a commission on your lunch or dinner food bill. What an easy and enjoyable way to support the Community Outreach activities of the DSRC. Please note that for your receipt to be included in the fundraiser you must present a copy of the flyer or show it on your phone to your server. See you there!

Model Train & Toy Show



The Spring Fling edition of our popular Model Train & Toy Shows takes place on Saturday, May 3rd from 9 am – 2 pm at the Hope Center in Ocean View, DE. This show brings together more than twenty model train and toy dealers from all over Delmarva who will set up approximately 100 tables to display their wide variety of model railroad-related



products. New and vintage trains in all gauges along with accessories, scenery, power and track will be exhibited for sale. Add to your collection, meet old friends, and view operating layouts in action. Tickets are sold at the door.

What is Z-Scale Model Railroading?

There are many scale sizes of model railroads but Z-scale at 1:220 is one of the smallest commercially available. Z-scale engines not only fit in the palm of your hand but are also characterized by their high prototypical detail. Z-scale was developed by the German manufacturer Marklin in 1972 and operates on 0-10 volts DC. Other manufacturers include Micro Trains, Rokuhan, and American Z-Line. The chief advantage is that an extensive model railroad can fit in a very small space. If you are interested in getting into model railroading but don't have much space, Z-scale is for you. Visit the Clubhouse to see our large inventory from the Dover donation, nearly all of which are in new-old stock unused condition.

