



# DELAWARE SEASIDE RAILROAD CLUB

www.delawareseasiderailroadclub.com  
dsrc@delawareseasiderailroadclub.com

ISSUE # 136

DECEMBER 2015

Editor - Bill Mixon

302-945-1627

P.O. Box 479, Ocean View, DE 19970

## ..NEWS.....NEWS.....NEWS.....NEWS.....NEWS.....

**RAFFLE TICKETS - GOOD NEWS-** new member Cheryl Tarlecky sold **50** tickets, the most by any member. Bill Ziegler and Bill Mixon sold **61** tickets at the Hartly Train Show ( in addition to their own tickets).

**RAFFLE TICKETS - BAD NEWS -** we have 30 members who have not yet returned their stubs and money. All of the "required" money ( first ten tickets ) should be turned in by Dec 1. All the rest must be turned in by Dec. 19. The success of this fundraiser depends on you.



A  
MERI  
CAN LEGION  
ARTISANS BANK  
B&E,BANKOFDELMAR  
ABESTFIREPLACESBETTER  
LIVINGBLUEWATERGRILLEBO  
BSMARINECLAYTONTHEATRECOA  
STALRENTALSCOASTALPOINTCOUNTR  
YWICKERCREATIVECONCEPTSCUSTOMMECH  
ANICALDAISEYWELLDRIILLINGDOUGSCUSTOMFIRE  
PLACESDELAWAREELECTRICCOOPEASTCOASTGARDE  
NCENTEREDWARDJONESFOEFOXPIZZAFRANKFORDCUSTO  
MWOODWORKSJHONSTRINREPAIRLONGABERGERM&TBANK  
MILLVILLEMINISTORAGEMOOSENADENTERPRIZESOCEANVIEWTI  
REPOTNETSPRACTICALLYYOURSPRIMESURPLUSSALTEDRIMSEAST  
DEHOBBIESSHOREWATERREFININGSMITHMCCARTNYANDOW-  
ENSSMITYMCGEES  
STATEFARM  
MCCARTHY  
STONESSUS  
SEXCOUNT  
YTANSEYW  
ARNERUPSV  
FWJEFFERS  
ONDOANEA  
NDSTERNER



## ENGINEER'S TWO CENTS



Greetings and I hope everyone enjoyed the Thanksgiving Feast, or at least got a chance to see family and friends. We'll be meeting Tuesday, December 1<sup>st</sup> and the meeting is important as we will decide on a budget for 2016 and elect new officers to the clubs board of directors. We will acknowledge the many years of service given by Lynne Hooker, Bob Hodges and Bill Ziegler as they step aside, allowing others the chance to support the organization in a very direct way.

Our various committees and teams have been very busy during the last few weeks. The new Polar Express train layout is nearly ready for its debut at the train club on Saturday, Nov. 28<sup>th</sup>. The library in Georgetown is the temporary home of the O Gauge modular layout, as well as the Thomas the Train display. We know these will both be big hits this holiday season. The G gauge display has been transformed into a winter scene thanks to the G gauge committee, and there is a new train layout ready for sale in O-27 gauge, complete with a Christmas Tree and two trains!

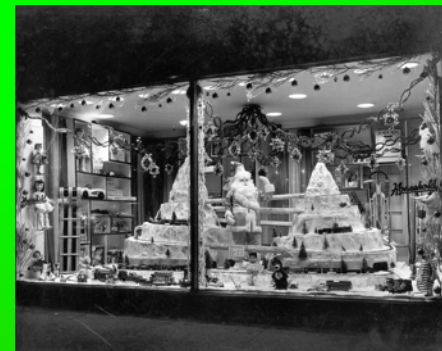
Our train raffle and movie ticket sales are moving along but we could use the help of anyone who has not yet sent in their money and the ticket stubs for the raffle, please get them in right away. We hope you will also think about attending the Polar Express movie night on Dec. 8<sup>th</sup> to help benefit the club. Tickets are \$10, and the club gets a nice percentage of that price.

As we approach the New Year, there are many activities the club will undertake moving into the winter and early spring. One is the building of a permanent O gauge layout in Dagsboro. The O gaugers need to meet and get their ideas in place so a track plan can be drawn up, and build-plans need to be made. In addition, we still have not established a workshop plan to teach children or youth groups about our hobby. We will continue to explore these ideas, and we will also continue our layout building scheme, to sell the displays as part of our overall fundraising activities.

The club will hold a Christmas Party on December 10<sup>th</sup>. Dinner to begin around 6 pm. The location is the club house at the Salt Pond community in the Bethany Beach area. If you are planning to attend, you should call John and Jean Hodges at 302-945-1627 and let us know how many are attending, and what covered dish item you can bring to share. The club is paying for the rental of the location, beer, wine and soft drinks/water. So we are looking for a large turnout to get as many people as possible. The facility has seating for 100, so let's all enjoy a great evening together.

John Hodges

# CHRISTMAS PAST



# Christmas Present



# CHRISTMAS FUTURE

